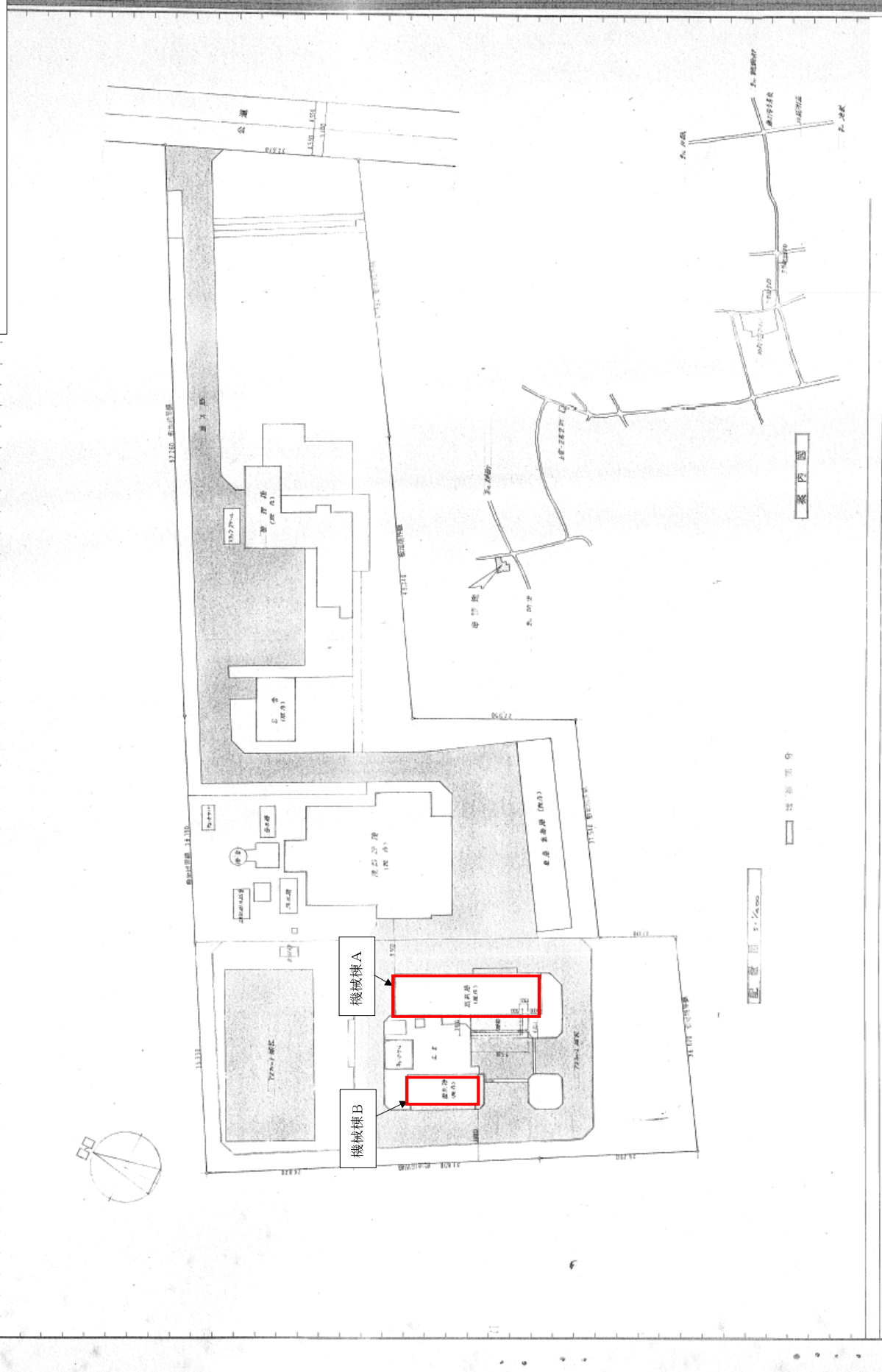
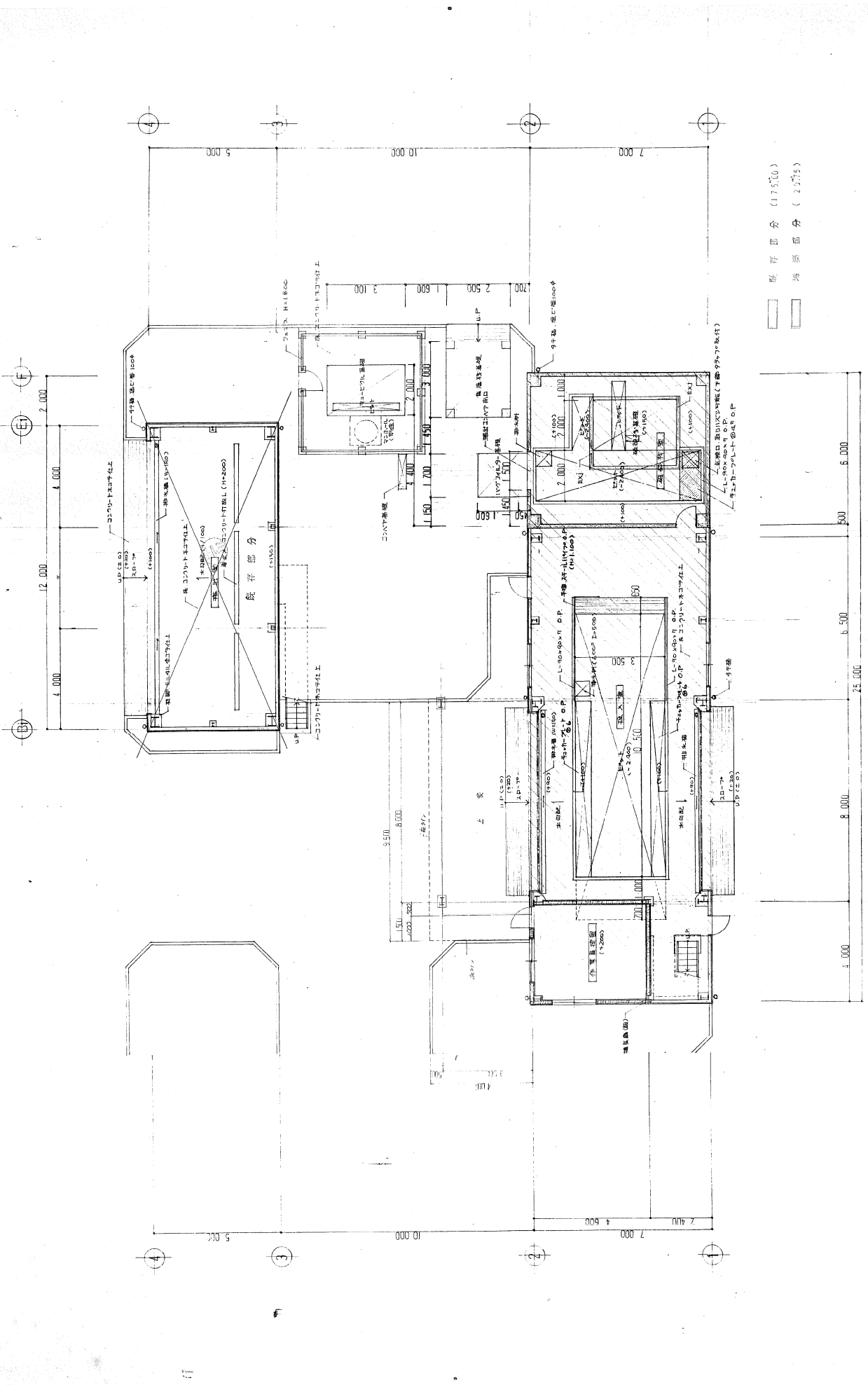


粗大ごみ処理施設（機械棟 A 及び機械棟 B）



配置図 1:2,500

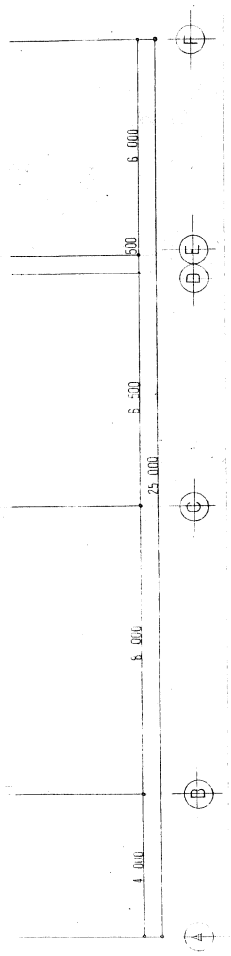
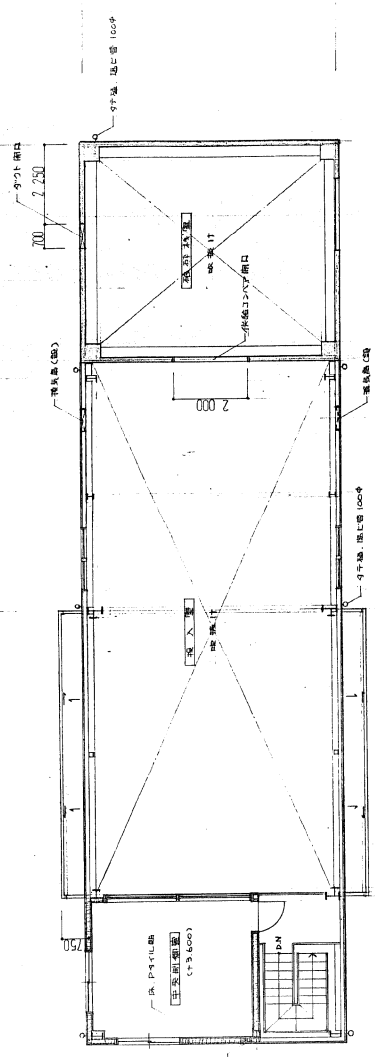
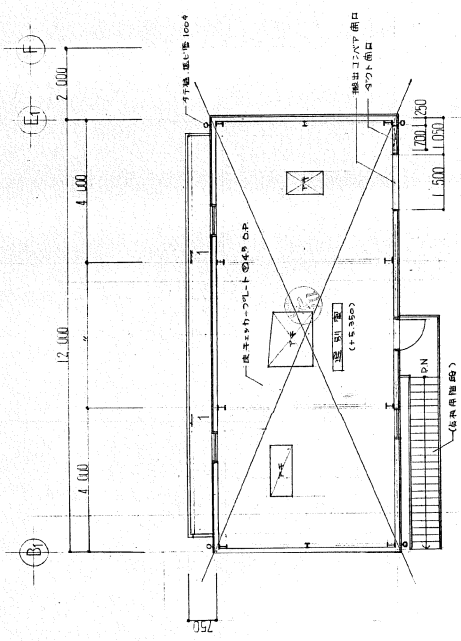
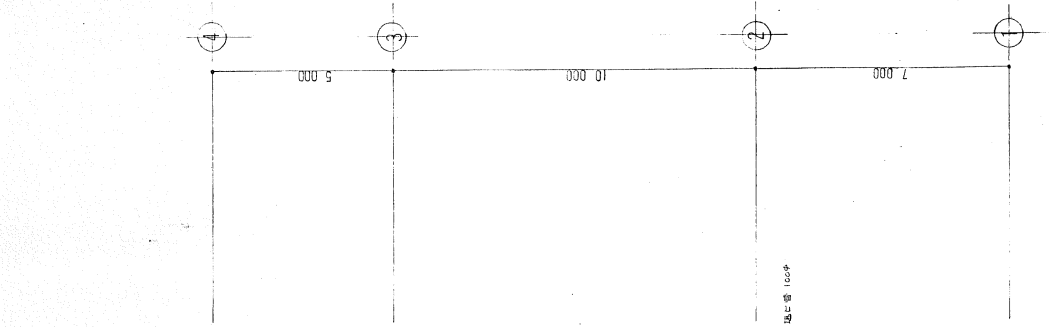
配置図



保存部分 (175.00)

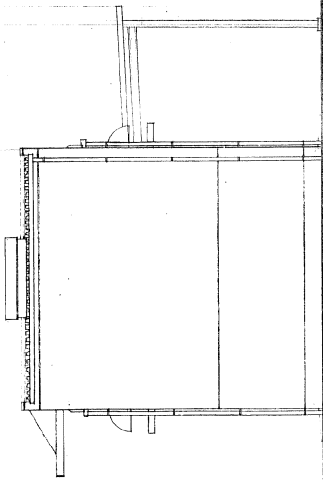
増築部分 (207.5)



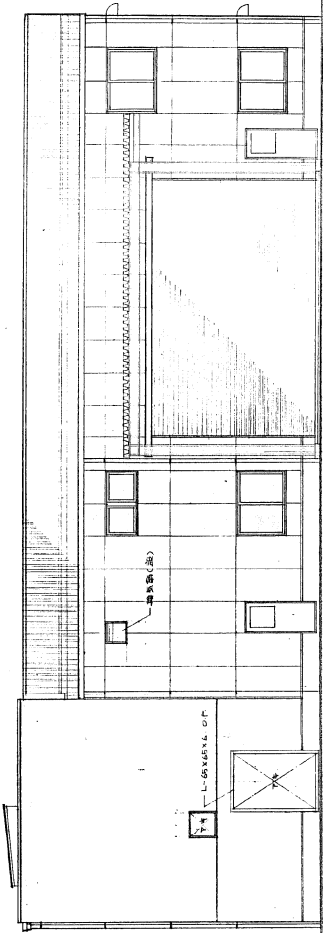


既設部分

410  
350  
500

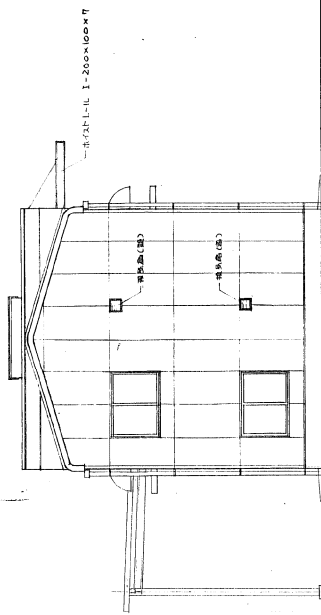


北立面图



西立面图

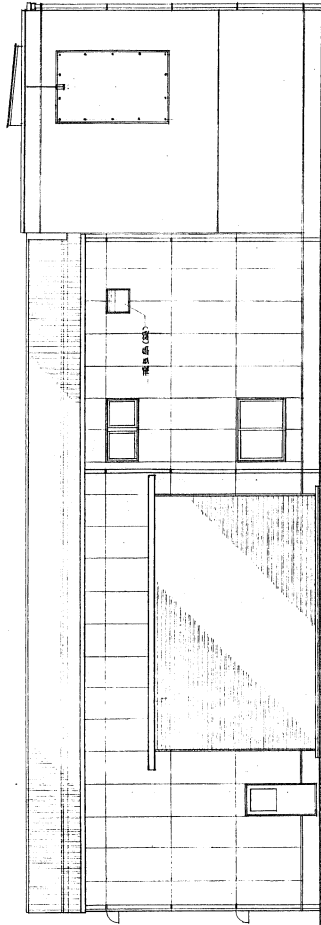
410  
350  
500



南立面图

350  
400  
500

既設部分



東立面图

圖 面 圖 ( 軸 向 圖 )

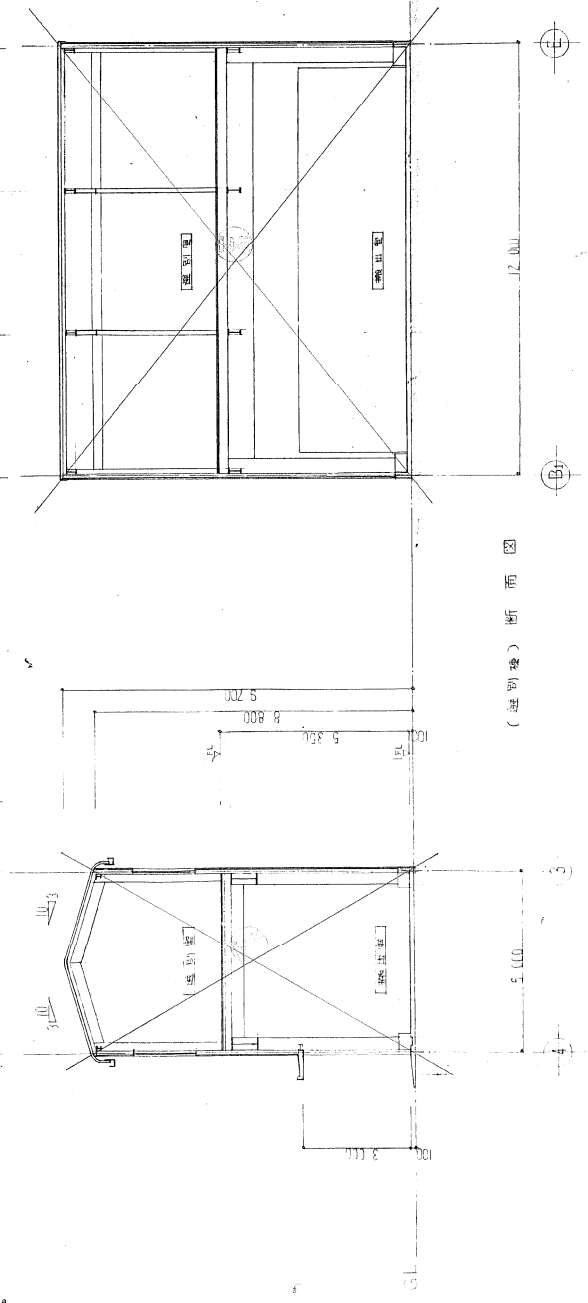
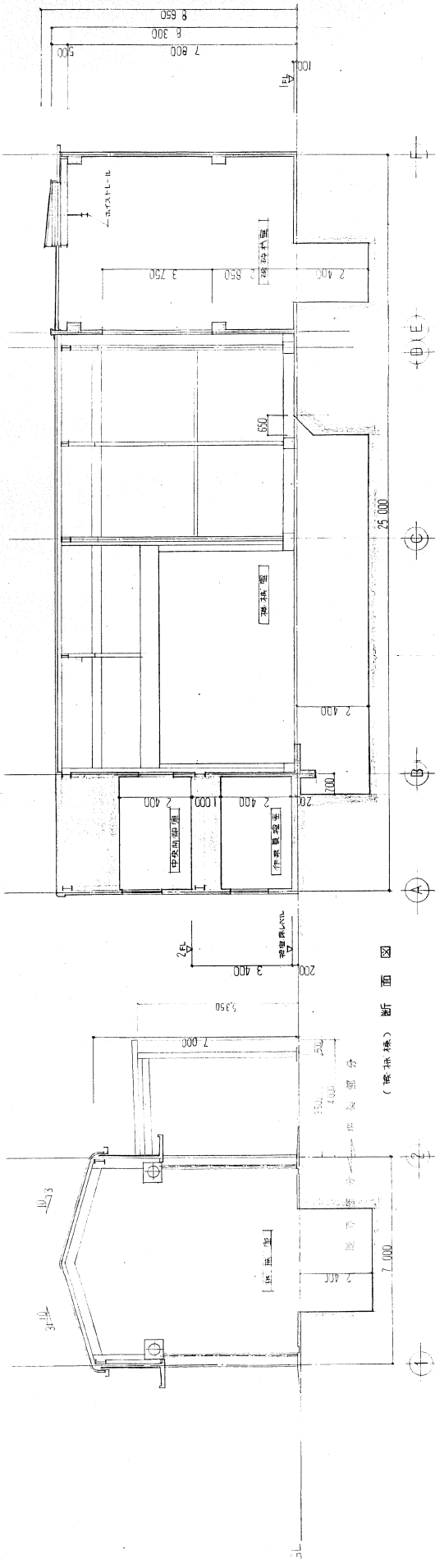
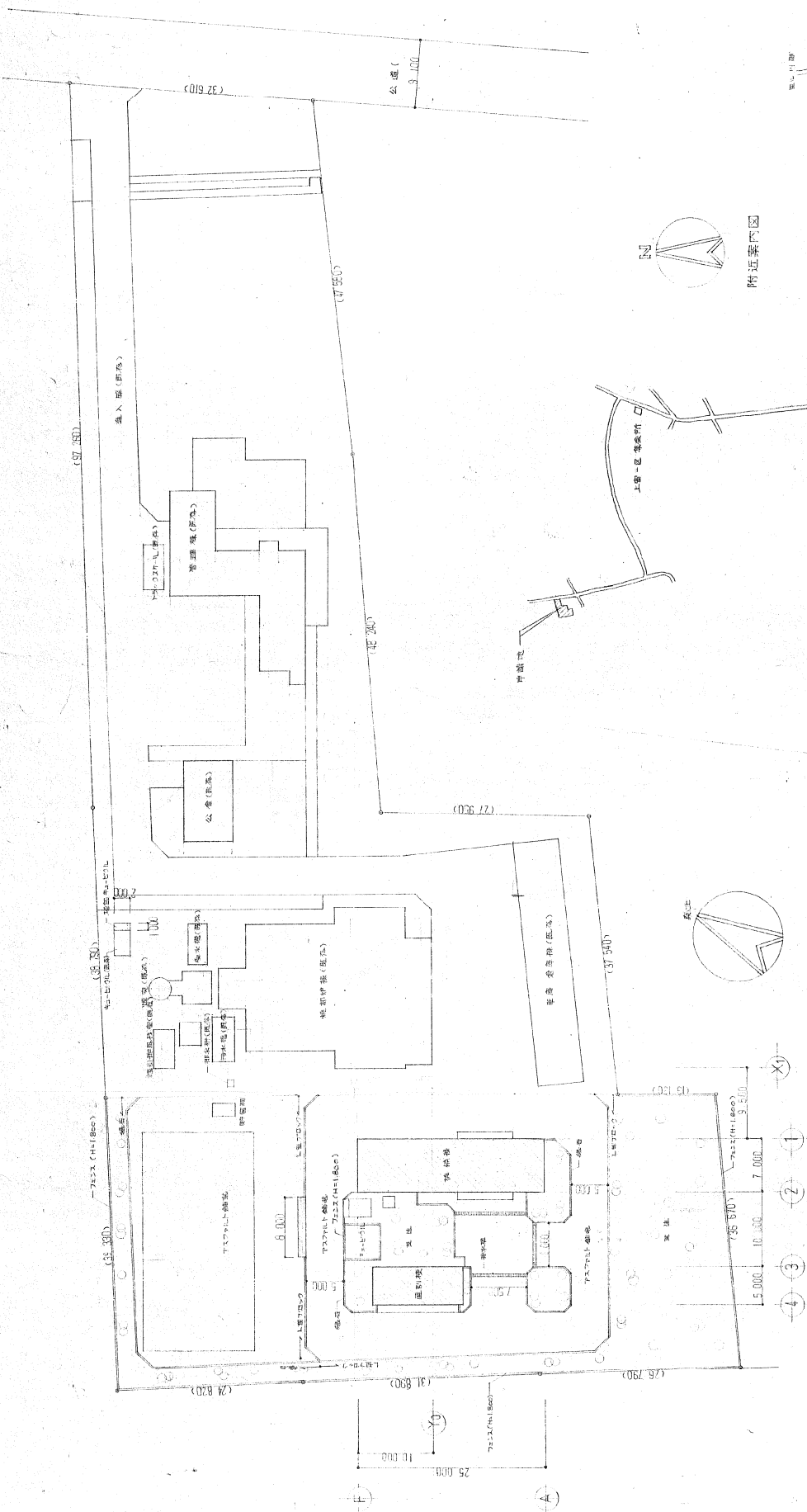


圖 面 圖 ( 軸 向 圖 )





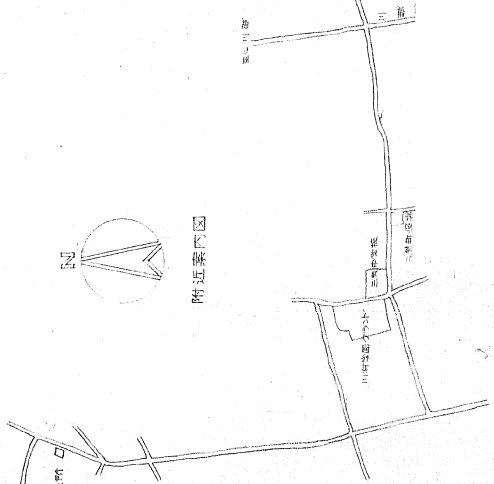
面積表

敷地面積	9,196.0 m <sup>2</sup>	埋込部分	埋込部分	合計
建築面積	1,016.4 m <sup>2</sup>	325.0 m <sup>2</sup>	1,341.4 m <sup>2</sup>	1,341.4 m <sup>2</sup>
延床面積	1,268.1 m <sup>2</sup>	325.0 m <sup>2</sup>	1,593.1 m <sup>2</sup>	1,593.1 m <sup>2</sup>
1階延床面積	1,016.4 m <sup>2</sup>	325.0 m <sup>2</sup>	1,341.4 m <sup>2</sup>	1,341.4 m <sup>2</sup>
2階延床面積	249.7 m <sup>2</sup>	86.0 m <sup>2</sup>	335.7 m <sup>2</sup>	335.7 m <sup>2</sup>

非建築面積計算

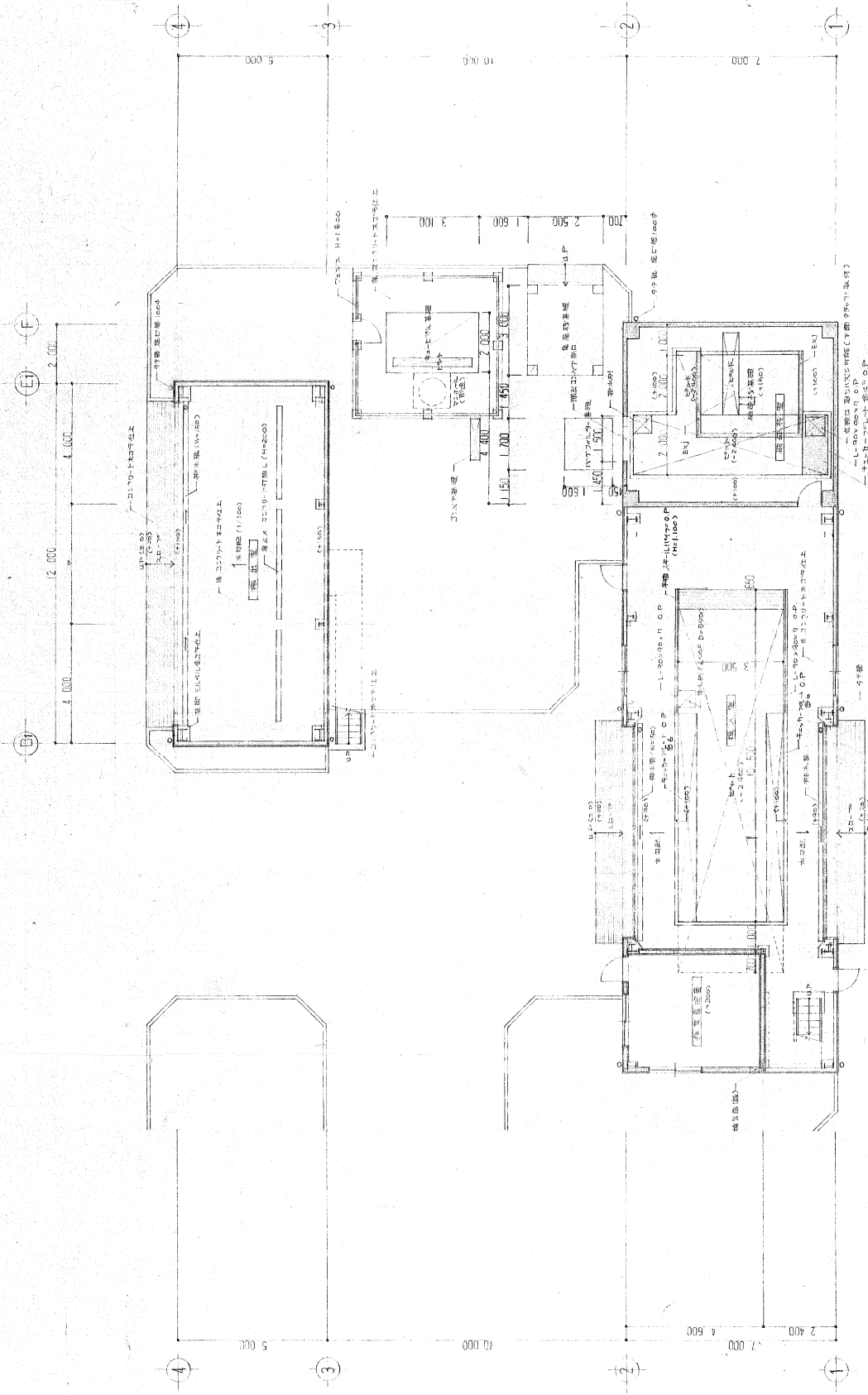
敷地面積	114.6 / %	面積係数	2.292	中央製作室	16.4 x 7.6	0.368
追加非建築面積	0.6 x 0.5 / 4	面積係数	2.0	作業用貯蔵	18.4 x 7.6	0.368

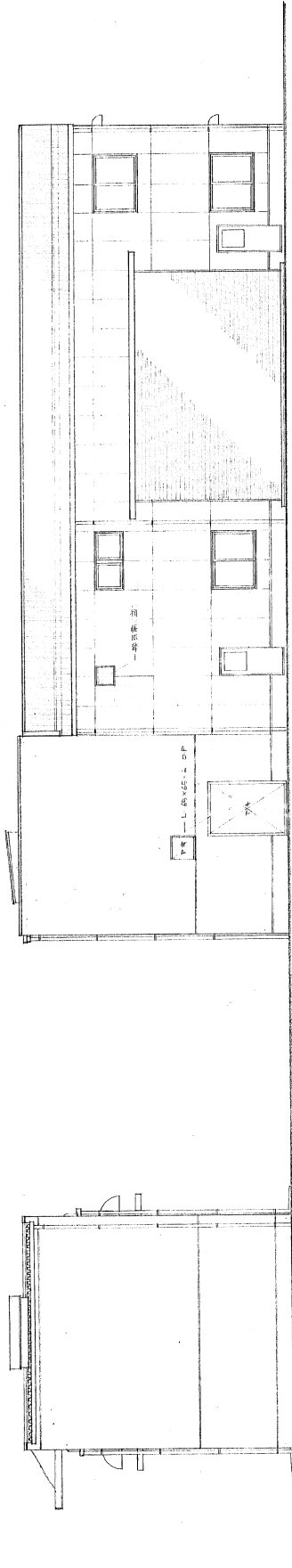
附近案内図



配置図

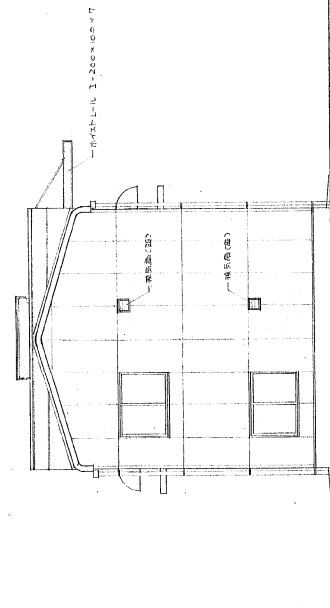




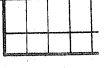
北立面图

北立面图

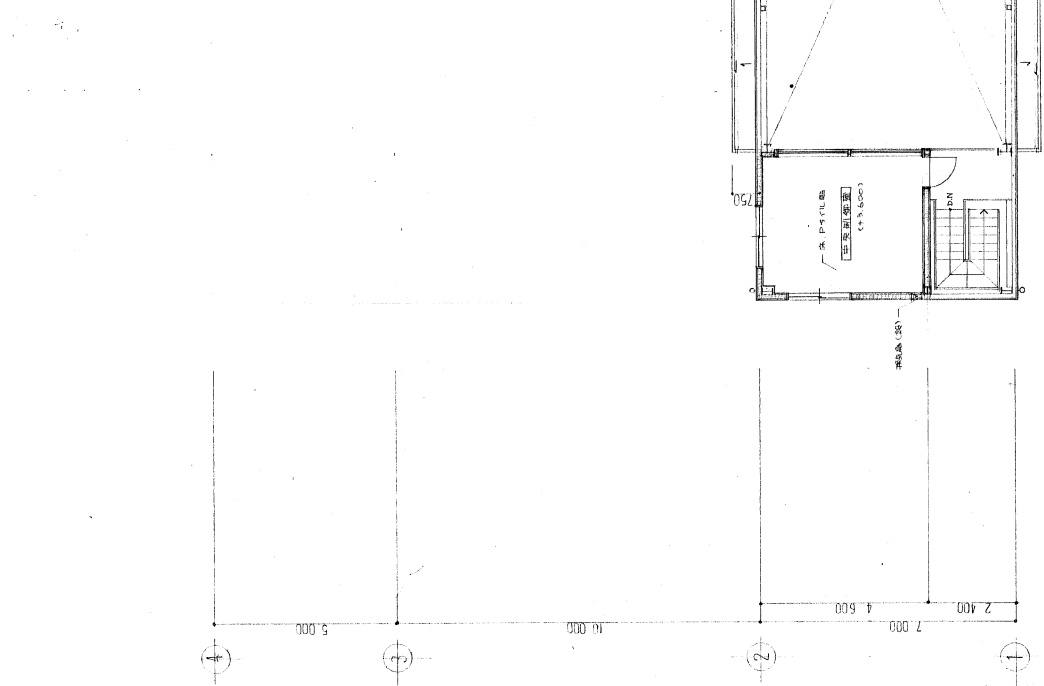
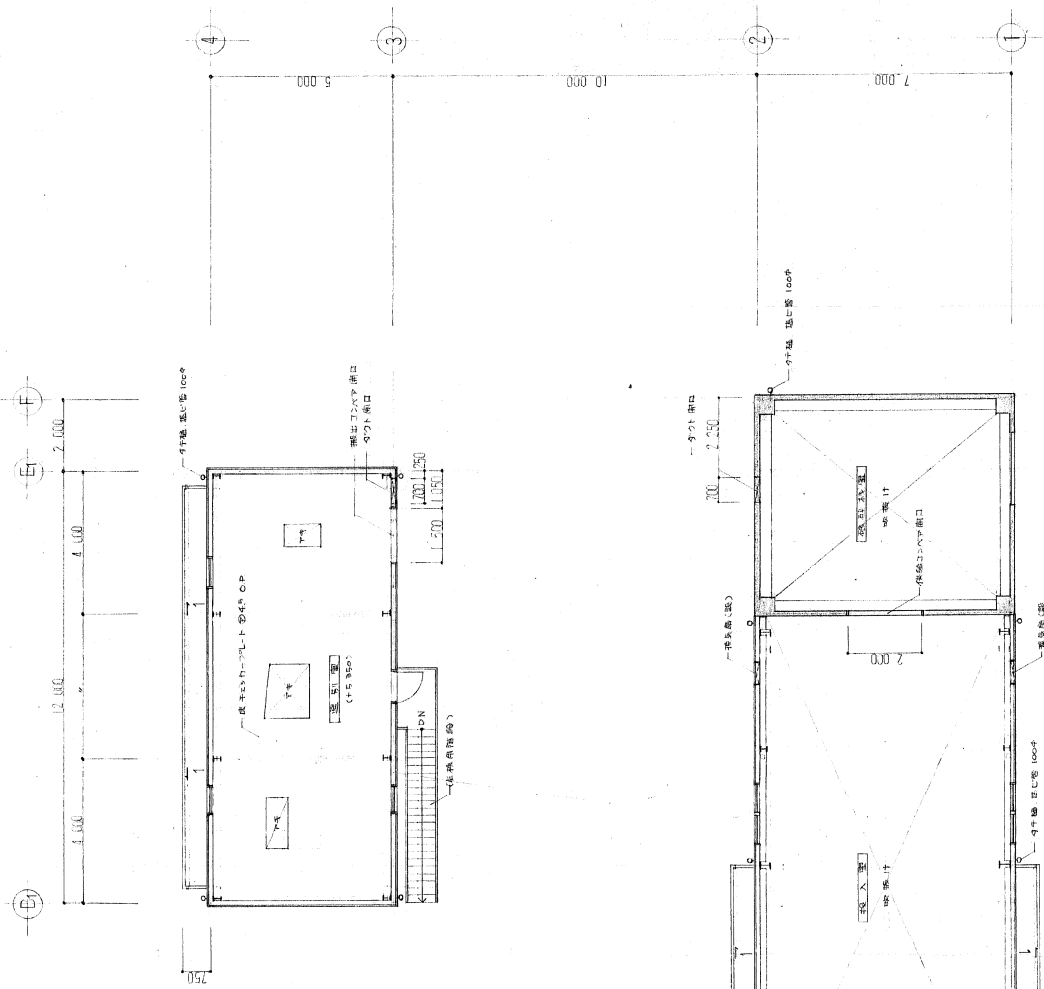


南立面图

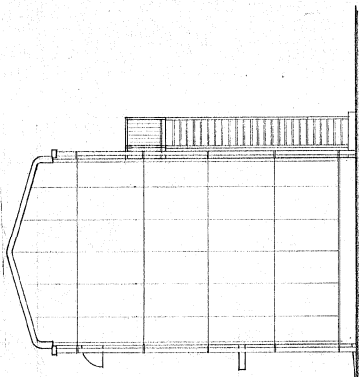
南立面图



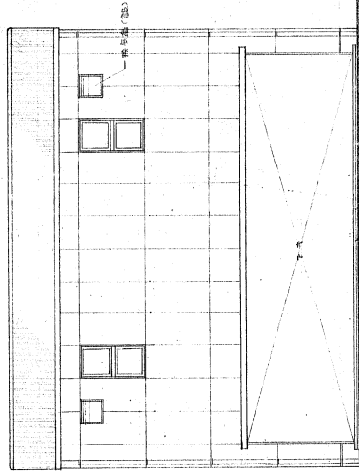




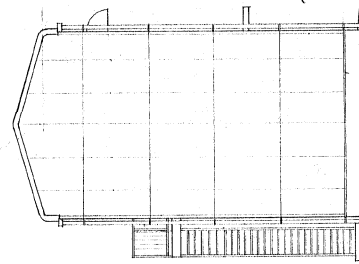
1	2	3
4	5	6



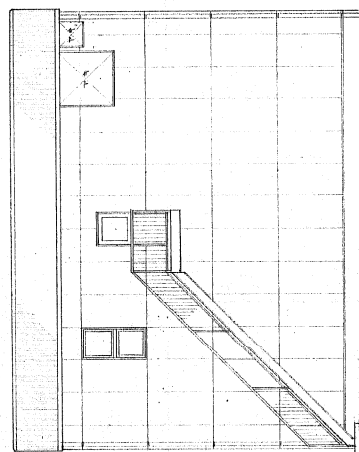
南立面图



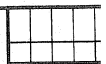
西立面图

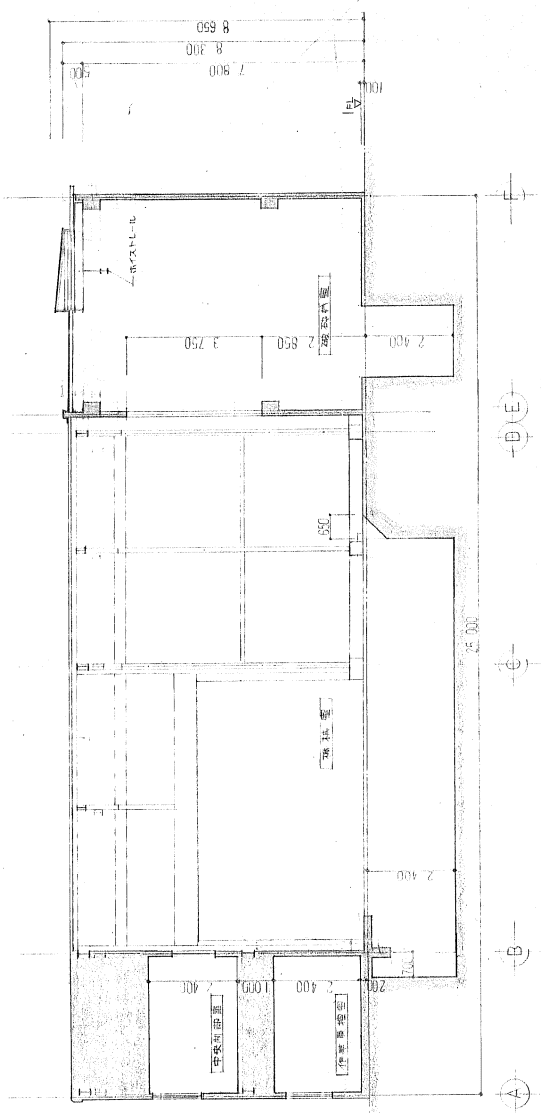


北立面图

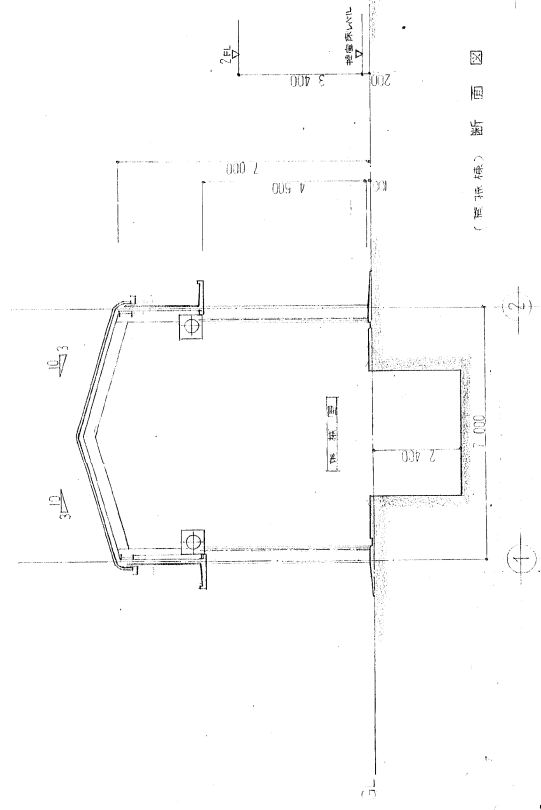


东立面图





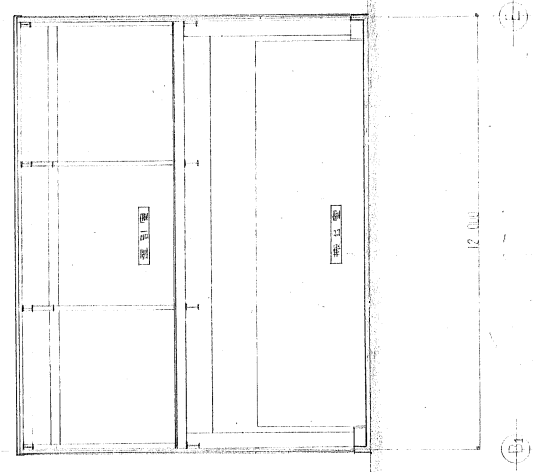
(單位: 毫米) 樓面圖



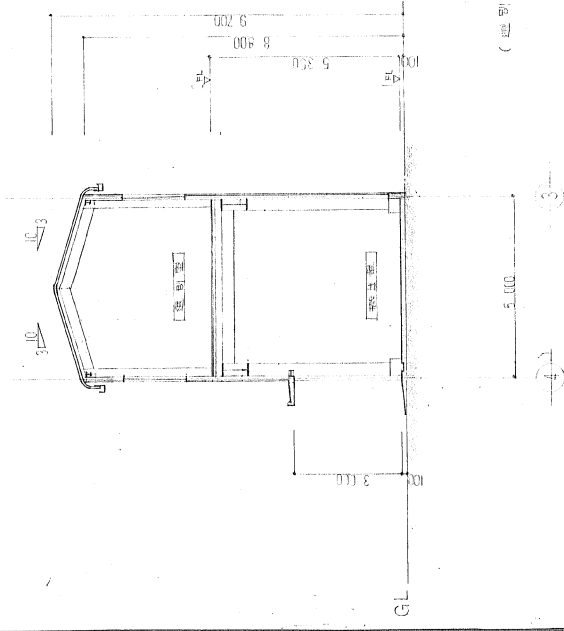
1-1

2-2

3-3



(單位: 毫米) 剖面圖



1-1

